



---

## **BM405 Power Screed**

BM405 concrete power screed is made by special aluminum material. It is ideal for tamping, sticking and smoothing the concrete surface. Maximum 12meter working length can combine according customer request. Jg405 screed is used for raise up the coincidence of the concrete. Also it can finish for arch and concave surface.

### **GENERAL SAFETY GUIDELINES**

Failure to follow instructions in this manual may lead to serious injury or even death! This equipment is to be used by qualified and trained personnel only. This equipment should not be operated by persons under 18 years of age.

Always use proper heavy lifting techniques when moving equipment.

Always make sure that machine is kept in proper operating condition.

Never operate this equipment without proper protective clothing including footwear.

Never operate with belt guard or any other guards removed.

Never leave machine unattended while running.

Never refuel while engine is running or while engine is hot.

Always refuel in a well ventilated area, away from sparks and open flames.

Never smoke while refueling.

Exhaust fumes are lethal! Operate machine in a well ventilated area, away from places where fumes can accumulate.



## **SAFETY INFORMATION**

### **FOLLOW ALL SAFETY INSTRUCTION**

Read All safety instructions carefully. Safety instructions will be found throughout this manual and on the machine. Keep all safety information in good, readable condition. If needed, replacement safety information is available.

Proper machine operation includes training for operators. Operators should be versed on machine safety and operation. Never allow a person who is not properly trained to operate this equipment.

Keep this machine in proper working condition. This includes keeping all safety decals on the machine clean and visible.

Do not modify this machine. Doing so may cause improper operation and may not be safe. This may also reduce machine life. Modifying this machine in any way will void the warranty.

### **OPERATE MACHINE SAFETY**

Always be aware of the operational area of your machine. Operators need to be careful to keep bystanders and nearby objects at a safe distance from the machine. Never let someone who is untrained operate this machine.

Study the operational area carefully. Do not attempt to use the machine where operation appears to be dangerous.

Keep the machine properly maintained and in good working order. This mainly entails keeping the machine clean and serviced.

Always try to do most work during daylight hours or with sufficient artificial lighting. Visibility must be good for this machine to be used effectively.

## **FUEL**

Handles fuel safely. Motor fuels are highly flammable and can be dangerous if mishandled. Do not smoke while refueling. Do not refuel if the engine is hot and running.

Always shut off fuel flow with the fuel line valve after every machine use. Never store the machine with fuel in the tank for any extended period of time.

Clean up spilled fuel immediately.



---

## **PERSONAL PROTECTIVE EQUIPMENT**

Always wear proper clothing while operating this equipment. Protective clothing includes (but is not limited to): boots, long sleeve shirt, long pants, gloves, hearing protection and safety eyeglasses. Consult with the construction site foreman to determine what protective clothing is required on the construction site.

## **MAINTENANCE SAFETY**

### **Cautions! Disconnect spark plug wires before attempting service.**

Before attempting maintenance on this machinery, know the procedure and have the correct tools. Always make sure that machine is stopped and the spark plug wires are disconnected before attempting service.

Securely support any machine components that must be raised for service (i.e. trowel arms). Never lubricate the machine or attempt service on a running machine.

Always allow the machine proper time to cool before servicing.

Keep machinery in proper running condition. Make sure that there is no buildup of concrete, grease, oil or debris. Keep all parts properly installed. Fix damage immediately and always replace worn or broken parts.

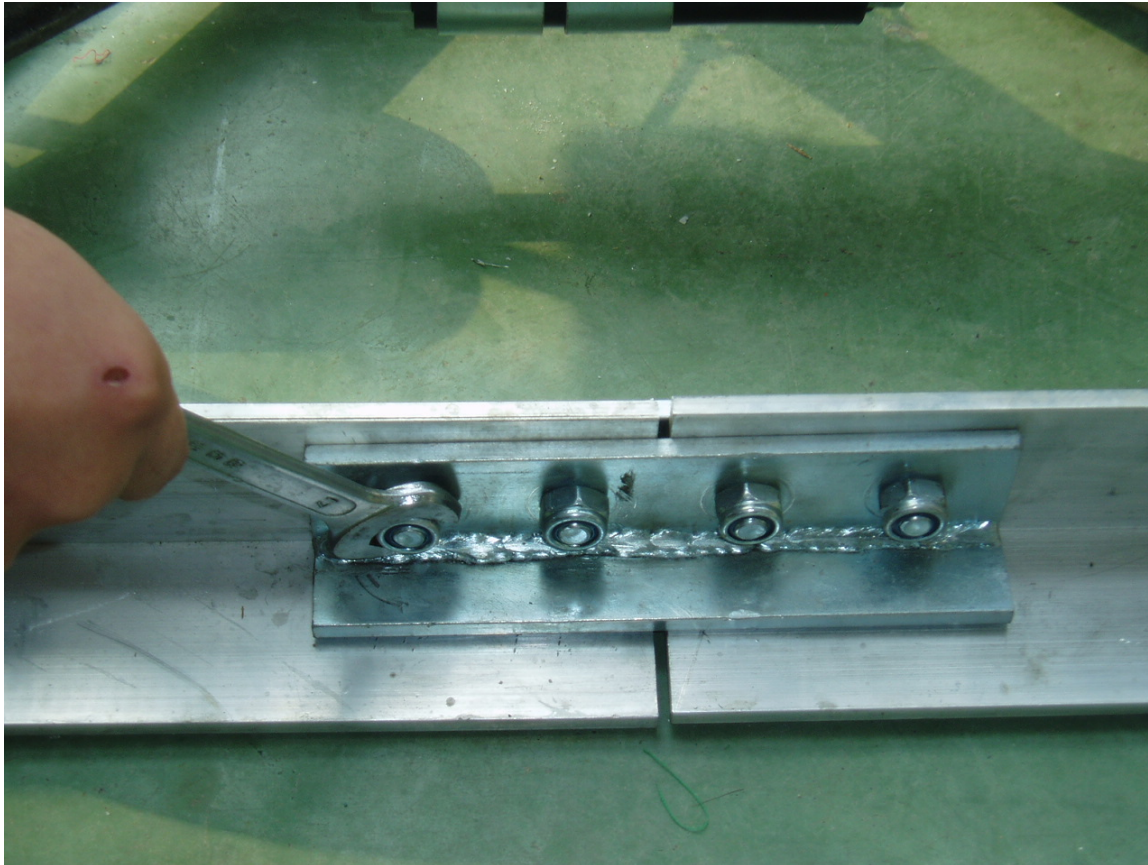
Dispose of potentially hazardous waste properly. Examples of potentially hazardous waste are: motor oil, fuel and filters. Use rigid containers for trapping these items.

Do not use old food or beverage containers, someone may be misled. Do not pour waste oil or fuel directly onto the ground, down a drain or into any water source.

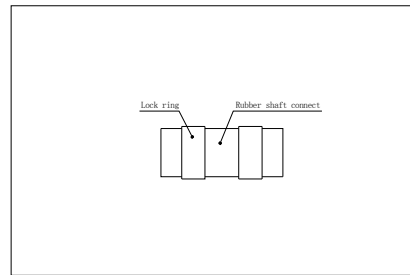
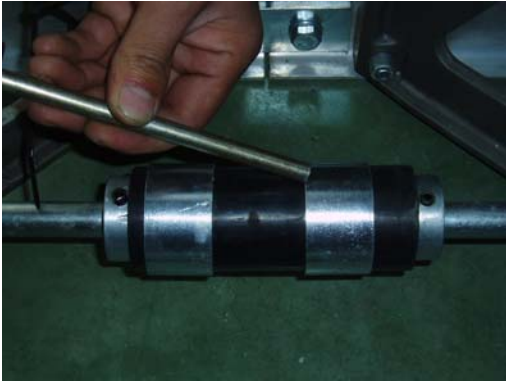
Inquire what the proper disposal procedures are for waste fuel and oil in your local area.

**ASSEMBLY**

BM405 has 3 different connect sections 2.54m, 1.31m, 0.71m. End use can combine according to the working length in every section with connect plate (show as the figure)



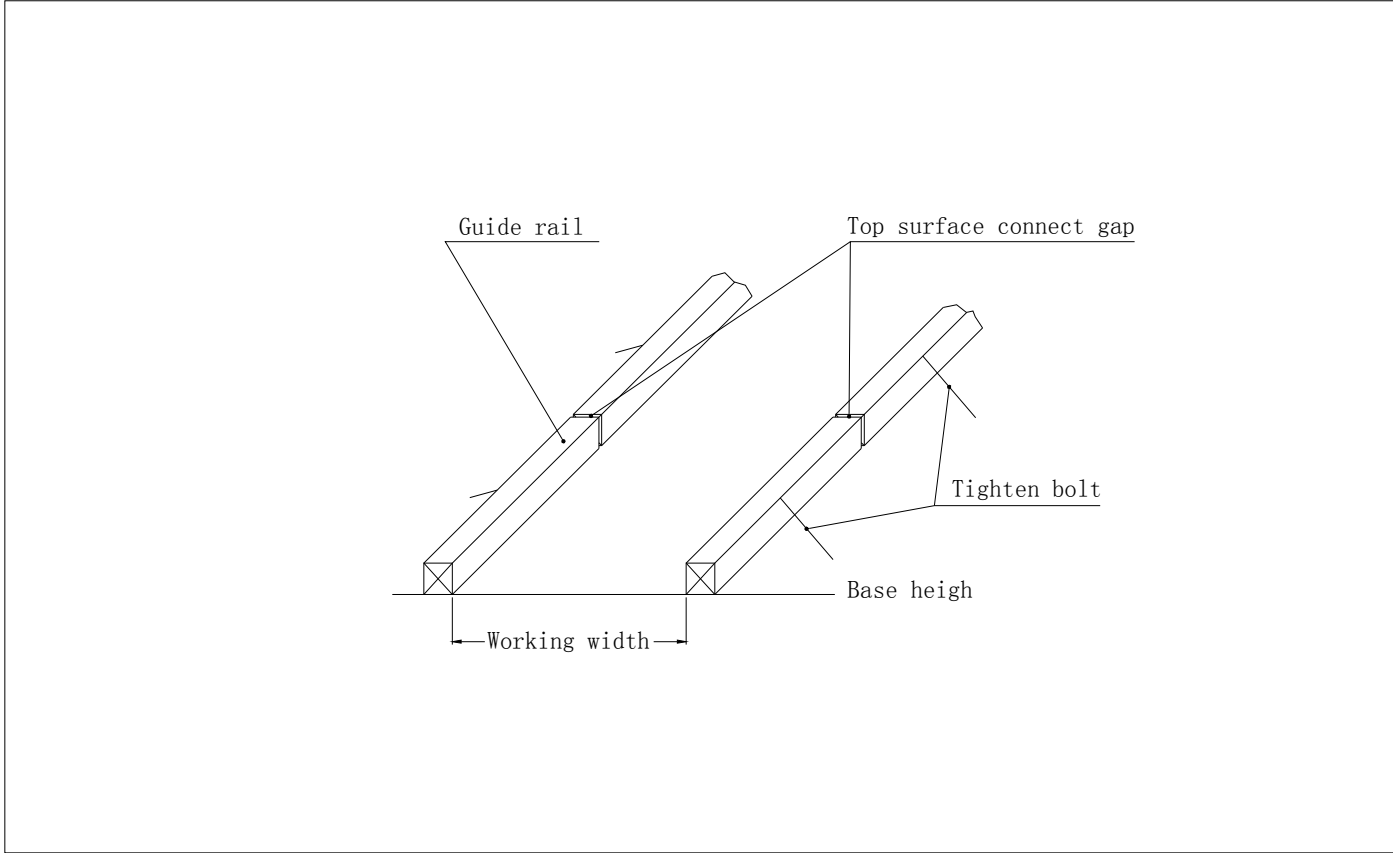
- When connect the shaft for each section move the 2 lock ring to the middle. After the shaft end put into the rubber connector, move the lock ring to each side. Otherwise it will break the rubber connector.



- Assembly the shaft eccentricity plate on the pulley



- make sure the guide rail connect in same surface. Tight bolts and screw must under the top face of the rail.



## Engine mounting

Put the engine on mounting base and install plate and spring washer lock the nut.



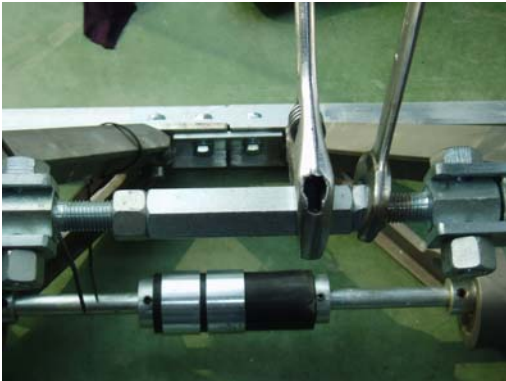
5. Install the drive belt. Adjust the pulley to keep the clutch and pulley in one line. Adjust the bolt under the engine mounting base for belt tension



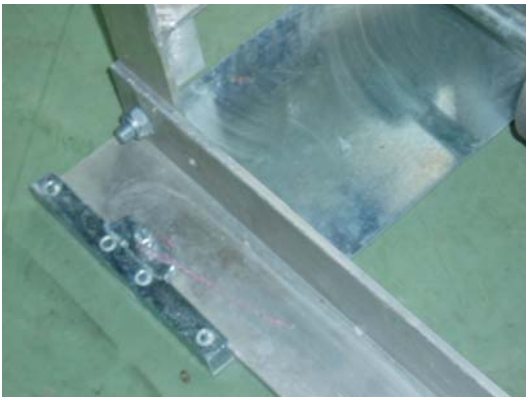
## Operation

### Combine and setup the screed machine (as following figure)

1. First combine the screed as 20-60cm longer than work width, the put square wood under the screed.
2. First loosen 8 pieces M10, then loosen the M16lock nut in the end of hex shaft. Rotate the hex shaft to make the screed as arch or concave surface according to the working request. It must have 1-3mm high in the middle center.

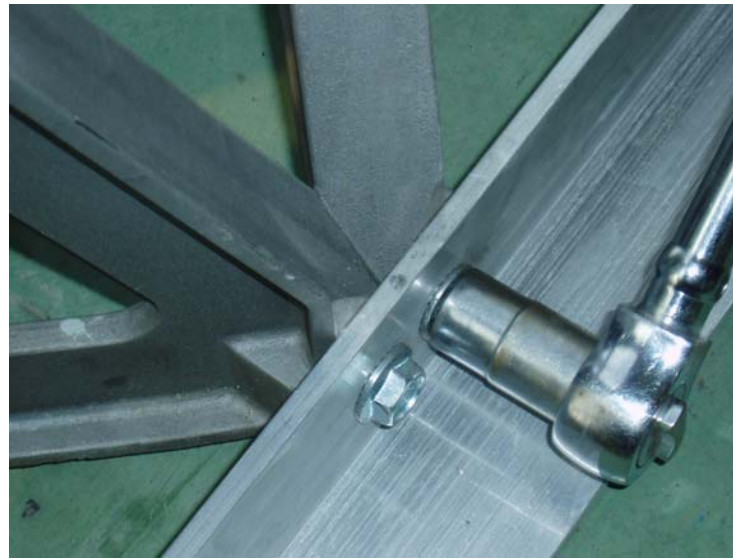
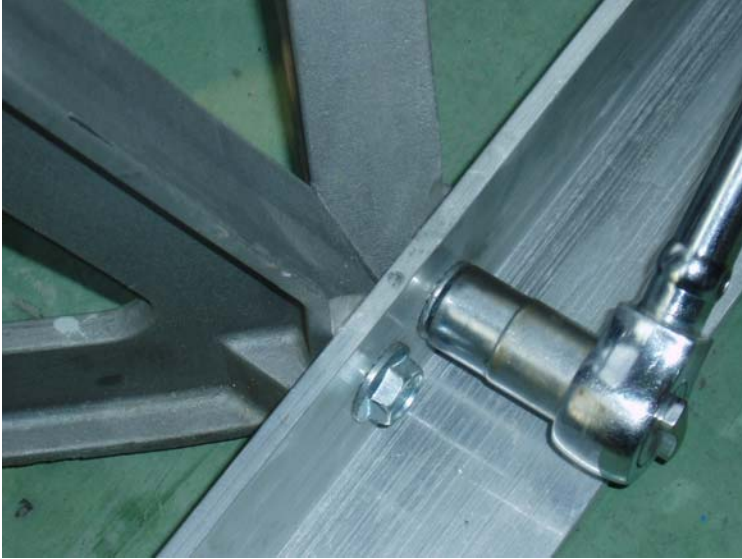


3. Install the anti-wear steel plate on the guide rail.



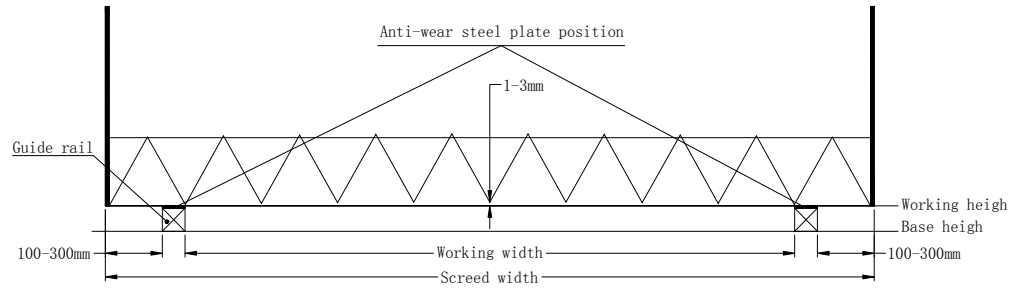


4. Tighten all the screed screw and bolt, then put the screed machine on the guide rail. It will be better to use sleeve tools.



5. loosen the winch lock and fixed the wire clasp
6. Engine switch in “ON” position, set throttle control level in idle position start the engine.
7. Running engine in maximum speed. Driving the winch by 2 workers in each side, make the screed walk smoothly.

**Walking speed is about 1.2—2.5meter/ minutes**





---

## **General Instructions**

### **Cleanup**

NEVER allow concrete to harden on the screed machine.

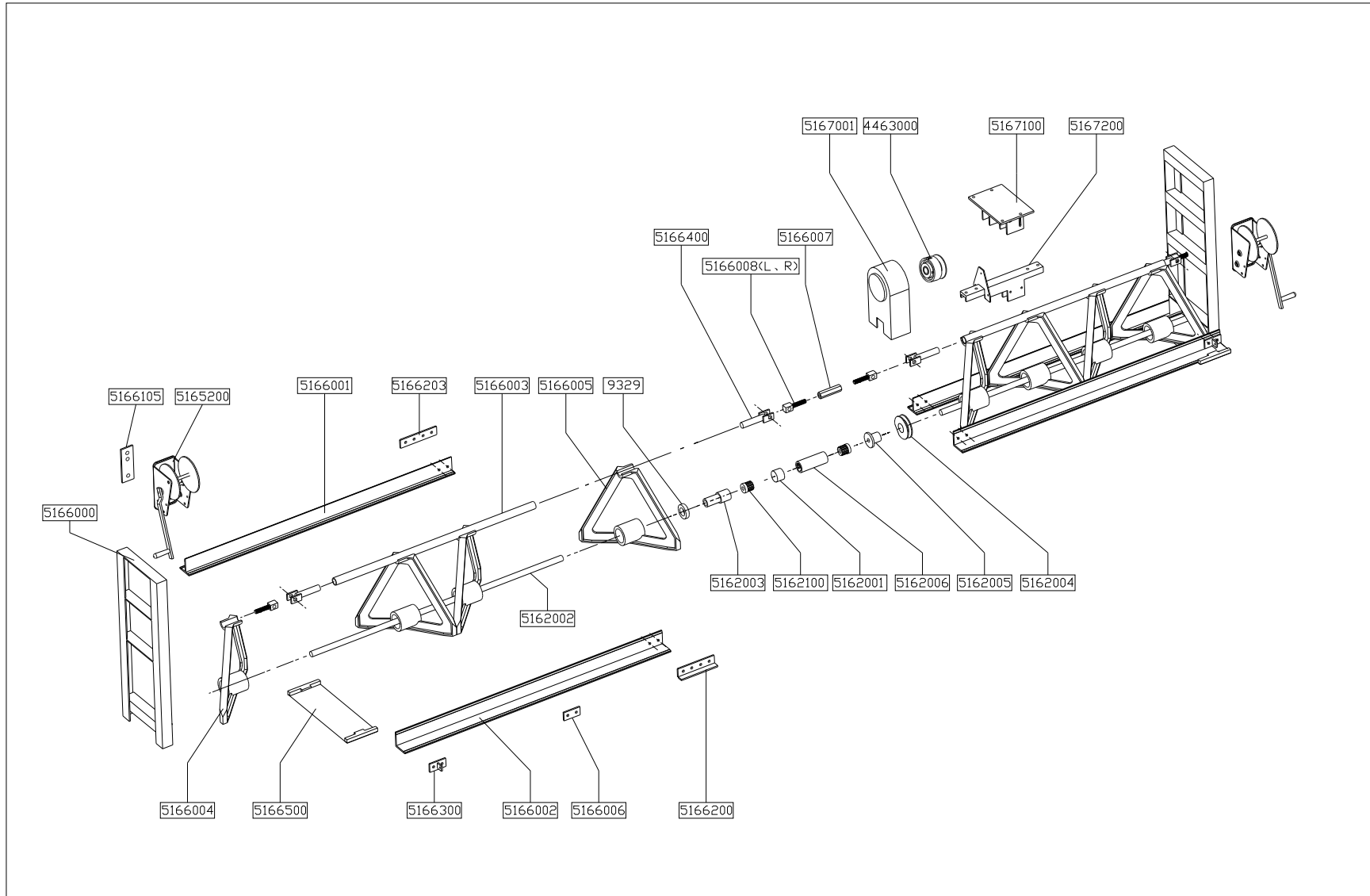
Immediately after use, wash any concrete off your screed with water. Be careful not to spray water on the engine. An old paintbrush or broom may help loosen any concrete that has started to burden.

**NOTE: See the engine manual supplied with your machine for appropriate engine**

## **SERVICE PROCEDURES**

### **Checking Belt Tension**

The first indication of belt wear is a reduced blade speed despite the engine running at full speed. Inspect belts often for signs of damage or excessive wear. There is no method for manual adjustment of belt tension. Excessively worn belts must be replaced.





### BM405 Screed parts list

Parts No.	Desp.		Parts No.	Desp.
9329	bearing		5166003	connect pipe
4463000	clutch assy.		5166004	tri-angle al frame(right)
5162100	shaft connector assy.		5166005	tri-angle al frame(left)
5162001	strength ring		5166006	short connect plate
5162002A	shaft (2.54m)		5166007	adjust pipe
5162002B	shaft(1.32m)		5166008(L, R)	adjust bolt
5162002C	shaft(0.71)		5166105	mounting plate for winch
5162003	eccentricity bush of shaft		5166200	long connect plate
5162004	pulley		5166203	hole connector
5162005	eccentricity wheel of pulley		5166300	connect plate of side frame
5162006	rubber connector of shaft		5166400	Folk arm connect assy.
5165200	Winch Assy.		5166500	mounting base for anti-wear plate
5166000	side frame assy.		5167001	belt cover
5166001	T-plate		5167100	engine mounting upper base
5166002	L-plate		5167200	engine mounting low base